



REEDY
LAND CO.

FOR SALE

±19.94 Acre Residential Home Sites in Union, SC

Parcel Overview

Elford Grove Road
Jonesville, SC 29353

REEDY



Executive Summary

Elford Grove Road



Property Highlights

- Mixture of pines and hardwoods
- Creek
- Rolling topography
- Unrestricted
- Close to town

Location Highlights

- ±15 min to Union
- ±25 min to Gaffney
- ±30 min to Spartanburg
- ±55 min to Rock Hill
- ±60 min to Greenville

Offering Summary

Lot 1: ±19.94 Acres | \$125,000

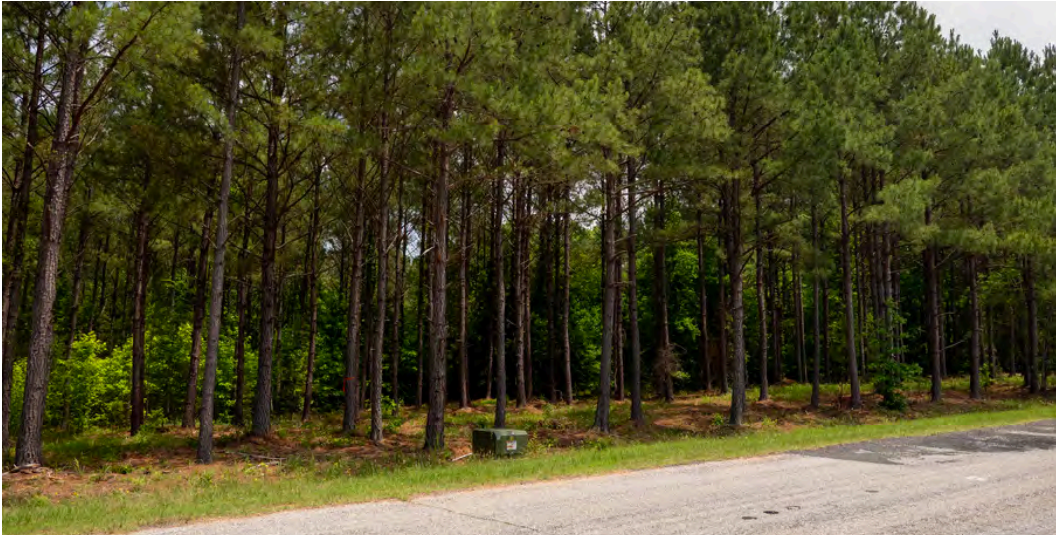
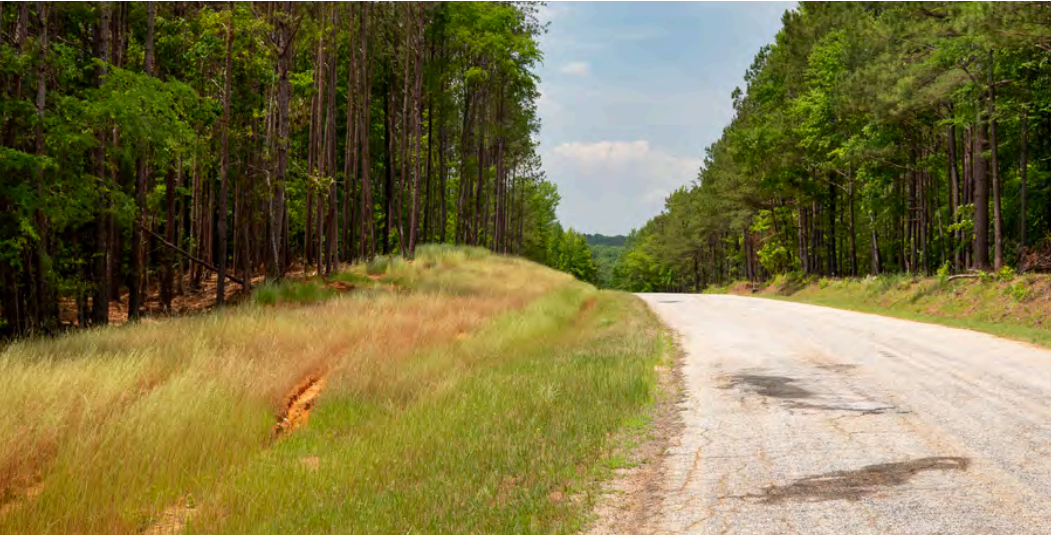
Lot 6: ±13.49 | \$95,000

Acreage, taxes, utilities and lot dimensions to be verified by Buyer and/or Buyers agent



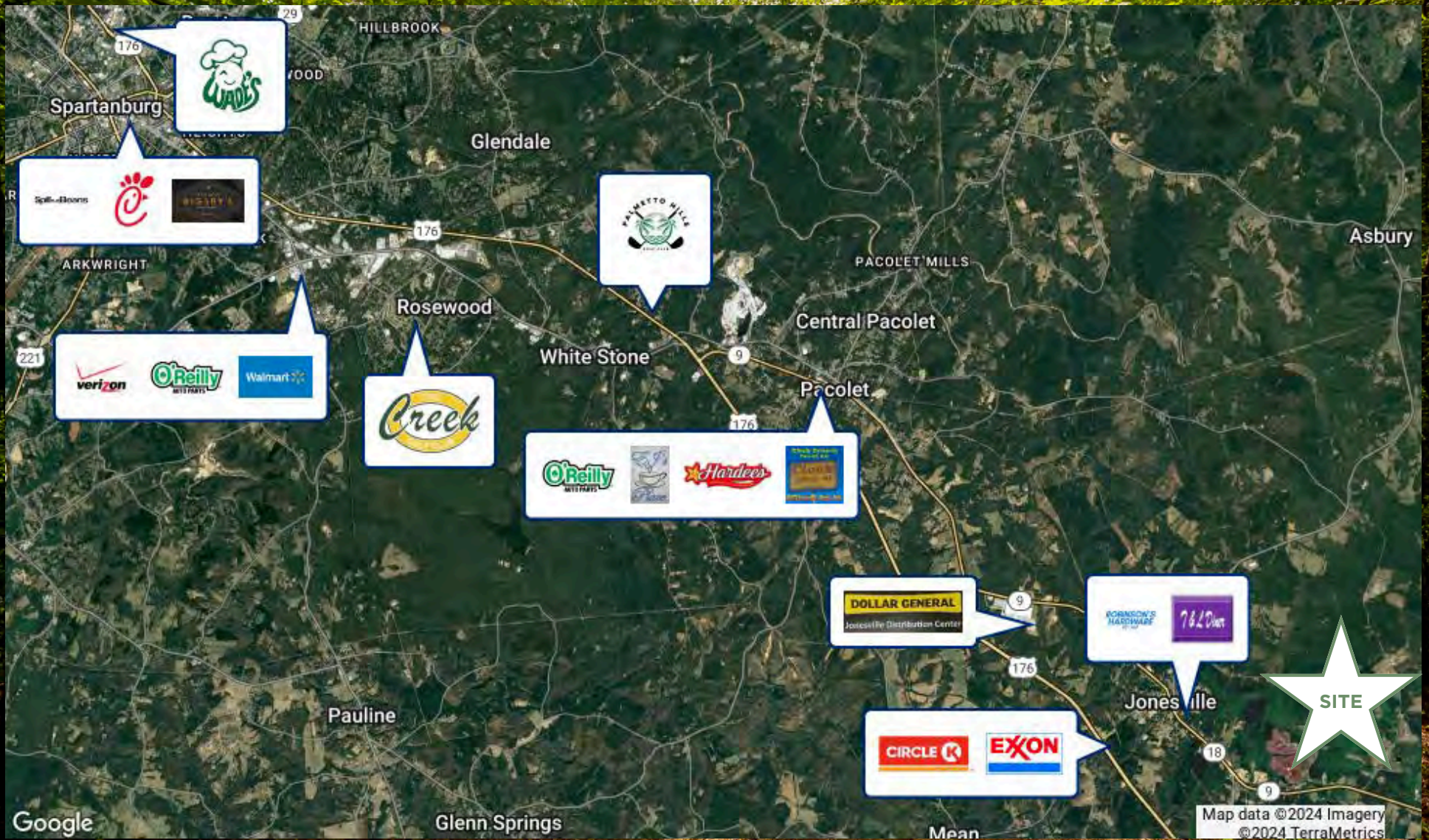
Property Photos

Elford Grove



Local Amenities & Retailers

Jonesville, SC



Contact Information

Reedy Land Co

REEDY

Anderson Drake

865.546.0342

adrake@reedypg.com



Josh Hester

336.567.7186

jhester@reedypg.com

