



South Mountain Family Camp

142 Mace Rd | Casar, NC 28020

Parcel Overview

142 Mace Road | Casar, NC 28020
Cleveland County Tax ID#: 38795



Executive Summary

142 Mace Road | Casar, NC 28020

REEDY

Property Highlights

- Turnkey camp, conference center, and/or wedding venue
- Unincumbered views of Painter Knob, Ben Knob, and High Rock.
- Rolling meadow topography with open hay fields.
- Meadowlands along Wards Creek.
- Mature hardwood forest.
- Internal road system.

Location Highlights

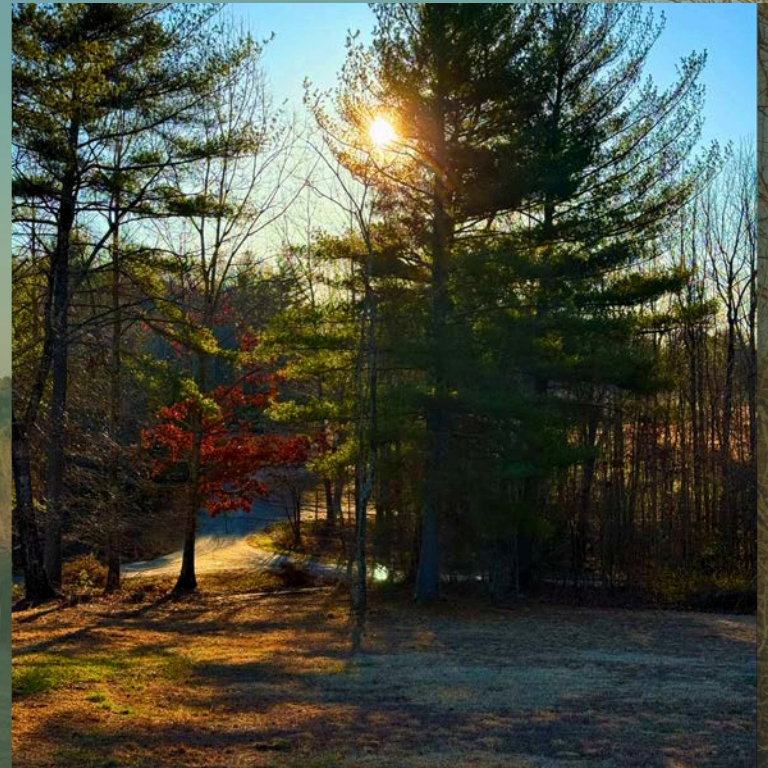
- Located in the rolling "Carolina Foothills" region of North Carolina
- ±1 hour from Charlotte
- ±1 hour from Asheville
- Neighboring South Mountain State Park

Offering Summary

Lot Size: ±155.7 Acres

Sale Price: \$3,500,000.00

Acreage, taxes, utilities and lot dimensions to be verified by Buyer and/or Buyers agent

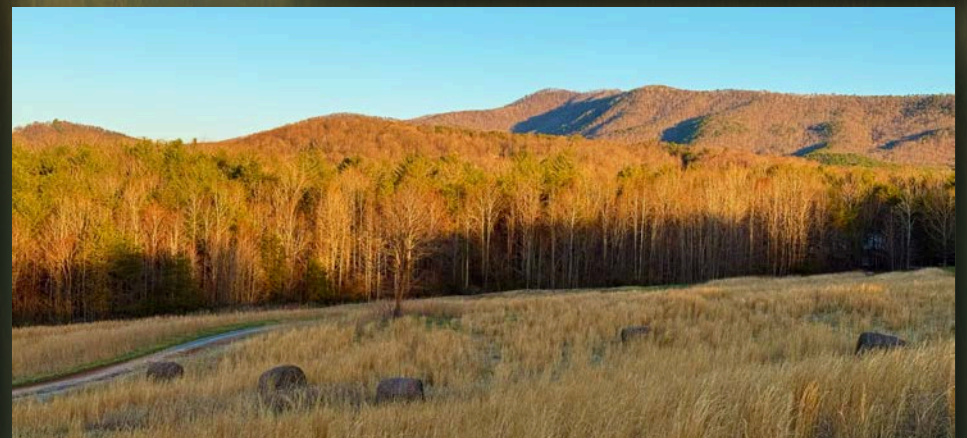


The Grand Meadow

South Mountain Family Camp

Property Highlights

- The Grand Meadow is the heart of South Mountain Family Camp. Centrally located between cabins, camping, and activities. It is a natural gathering place for community group, picnics, weddings, games, and conferences.
- At the crest of the hill is a pavilion overlooking rolling pasture and South Mountain State Park.



Housing

Bunk Cabins, Family Cabins, and Heritage House



RV Campsite and Sports Fields

South Mountain Family Camp

Property Highlights

- RV campground with six full hookups Water, Power, Sewer
- Activity field
- Picnic shelters
- Softball field



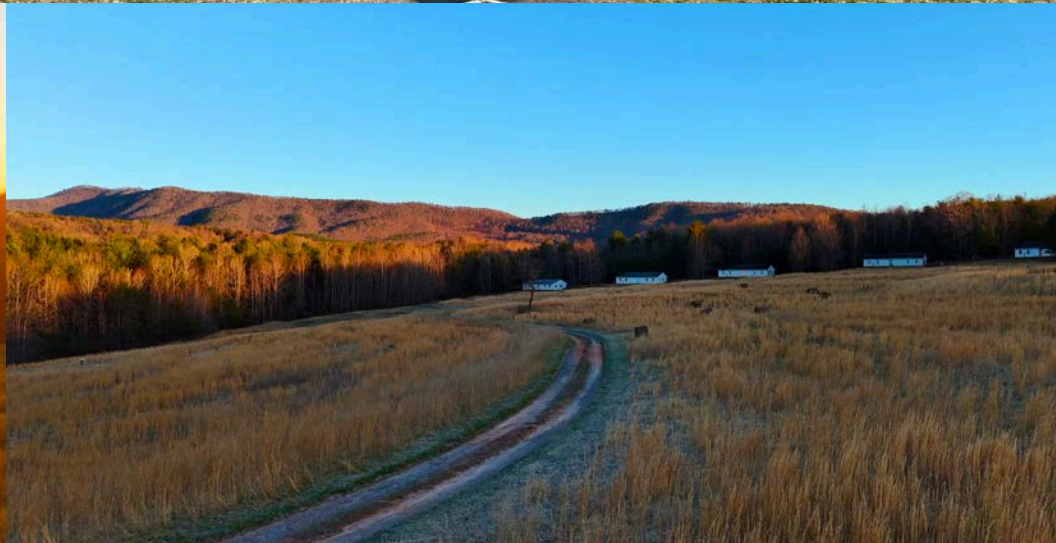
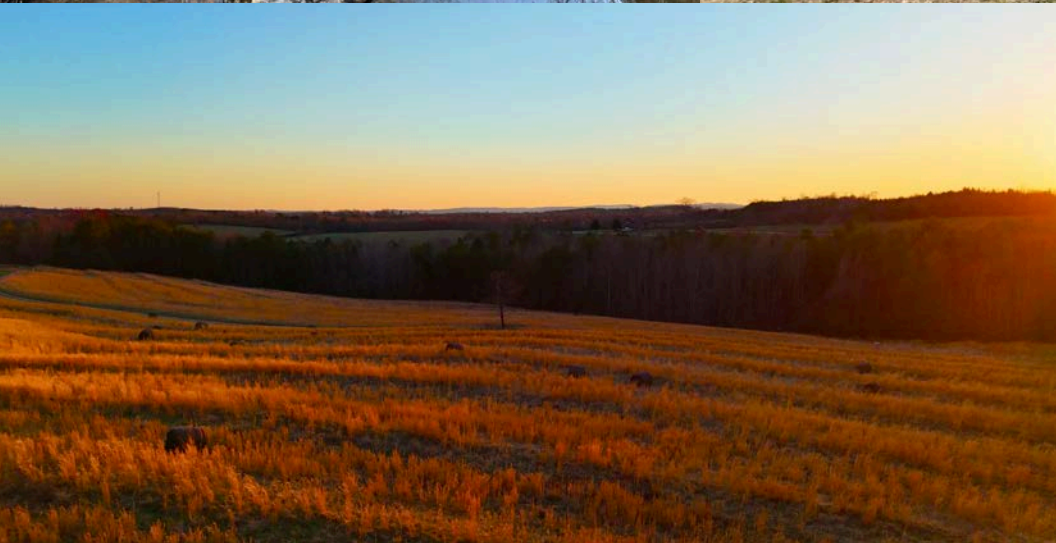
Indoor and Outdoor Dining Facilities

South Mountain Family Camp



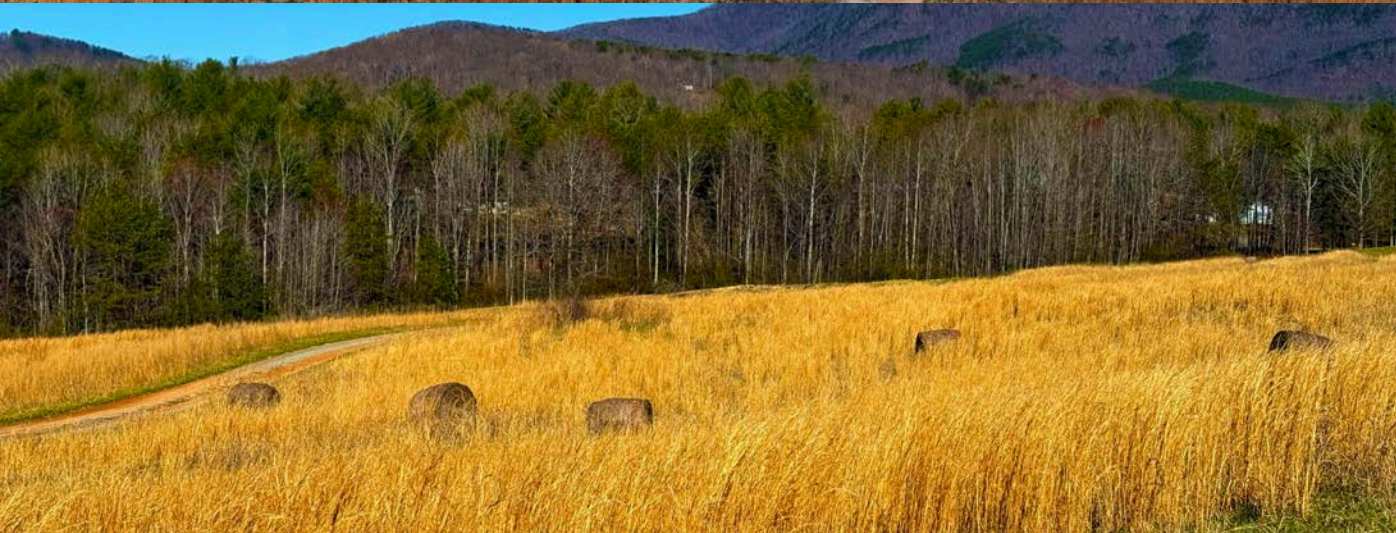
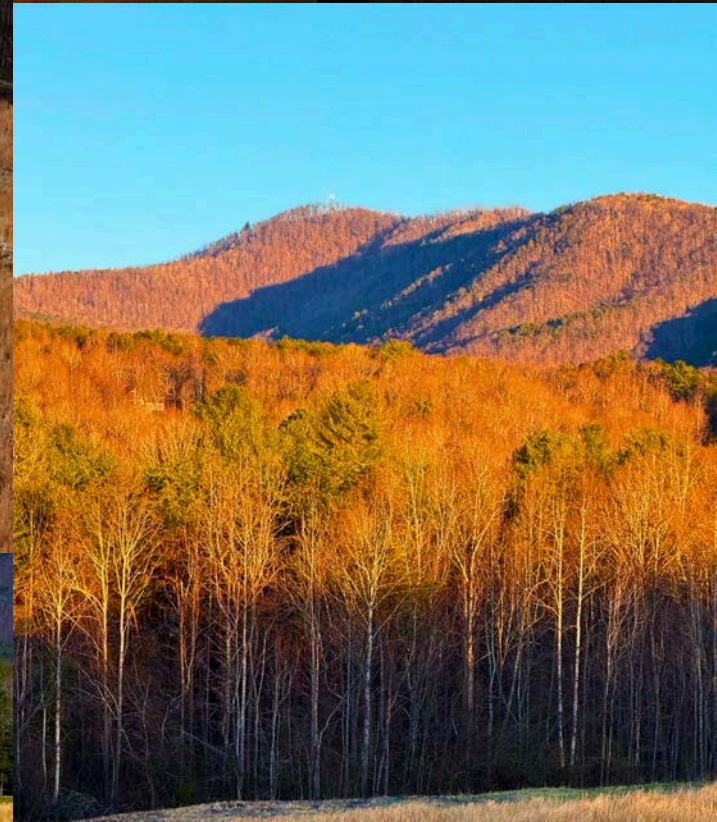
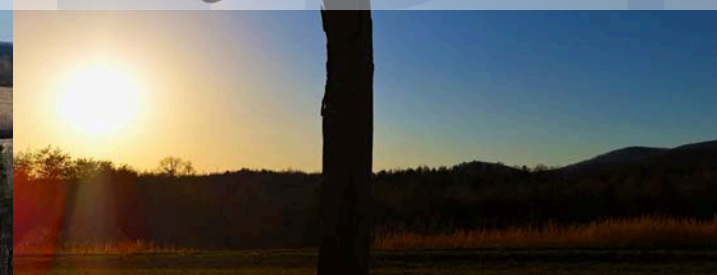
Additional Photos

South Mountain Family Camp



Additional Photos

South Mountain Family Camp



Municipality

142 Mace Road | Casar, NC 28020

REEDY



Property Map

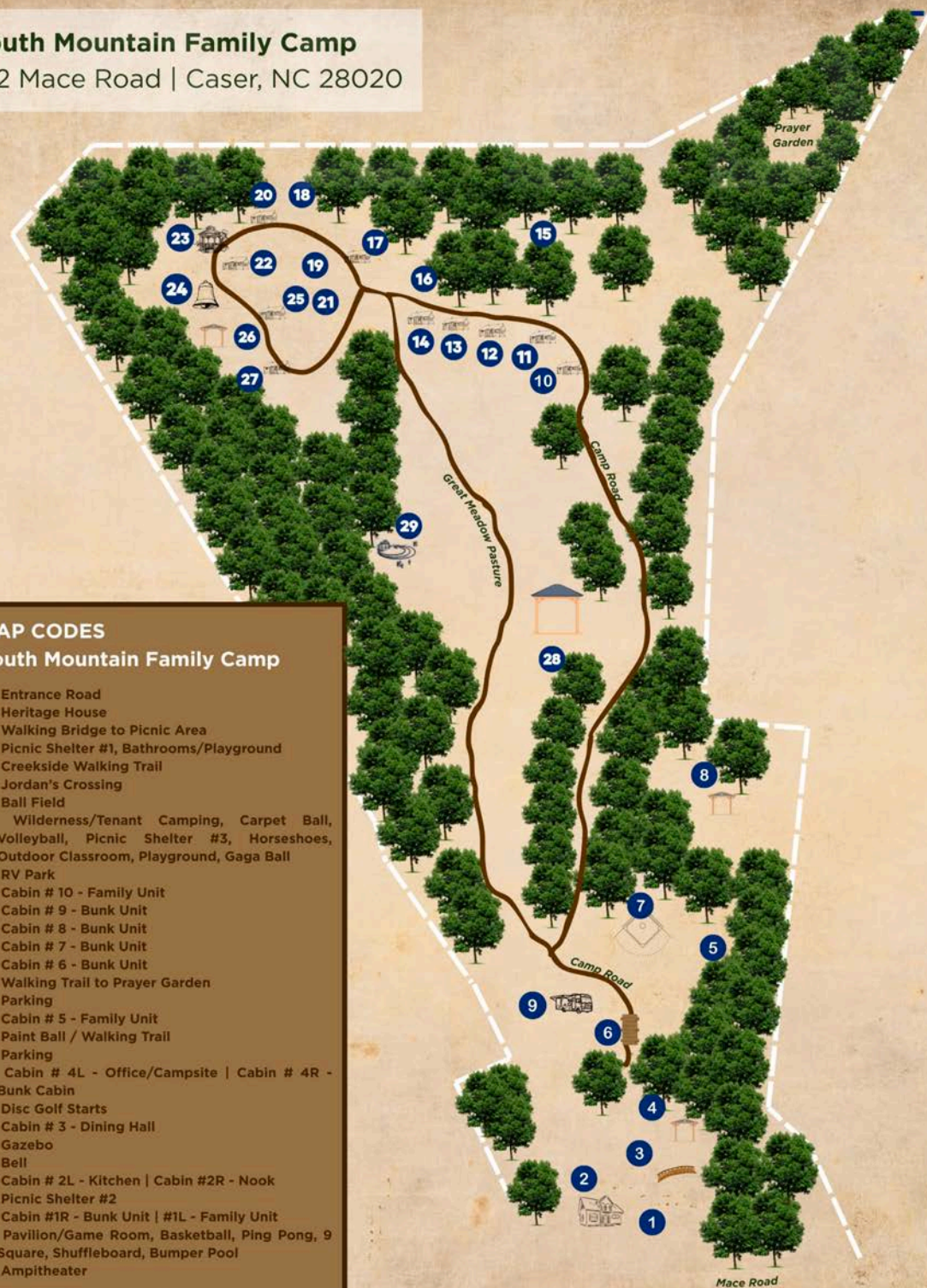
South Mountain Family Camp

142 Mace Road | Caser, NC 28020

MAP CODES

South Mountain Family Camp

1. Entrance Road
2. Heritage House
3. Walking Bridge to Picnic Area
4. Picnic Shelter #1, Bathrooms/Playground
5. Creekside Walking Trail
6. Jordan's Crossing
7. Ball Field
8. Wilderness/Tenant Camping, Carpet Ball, Volleyball, Picnic Shelter #3, Horseshoes, Outdoor Classroom, Playground, Gaga Ball
9. RV Park
10. Cabin # 10 - Family Unit
11. Cabin # 9 - Bunk Unit
12. Cabin # 8 - Bunk Unit
13. Cabin # 7 - Bunk Unit
14. Cabin # 6 - Bunk Unit
15. Walking Trail to Prayer Garden
16. Parking
17. Cabin # 5 - Family Unit
18. Paint Ball / Walking Trail
19. Parking
20. Cabin # 4L - Office/Campsite | Cabin # 4R - Bunk Cabin
21. Disc Golf Starts
22. Cabin # 3 - Dining Hall
23. Gazebo
24. Bell
25. Cabin # 2L - Kitchen | Cabin #2R - Nook
26. Picnic Shelter #2
27. Cabin #1R - Bunk Unit | #1L - Family Unit
28. Pavilion/Game Room, Basketball, Ping Pong, 9 Square, Shuffleboard, Bumper Pool
29. Amphitheater



Contact Information

Reedy Land Co



Jenks Patrick

Senior Associate

864.506.0416

jpatrick@reedypg.com