

# Lake Hill Drive

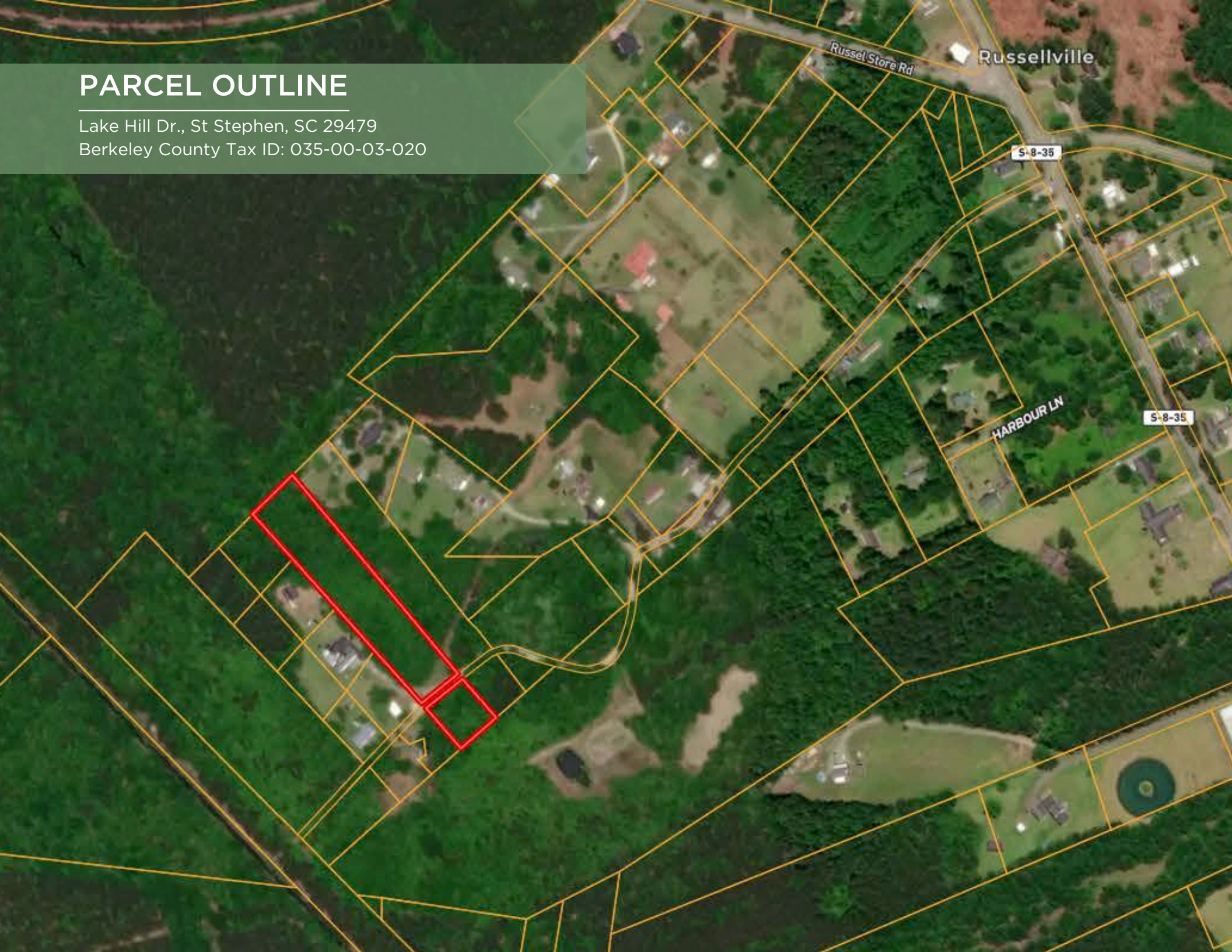
±2.5 Acre Homesite ±25 minutes to Moncks Corner



**REEDY**  
LAND CO.

# PARCEL OUTLINE

Lake Hill Dr., St Stephen, SC 29479  
Berkeley County Tax ID: 035-00-03-020



# EXECUTIVE SUMMARY

St Stephen, SC 29479



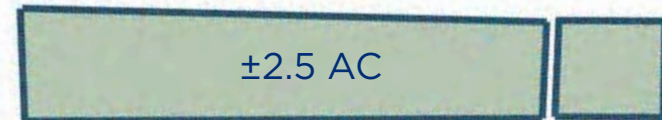
## Property Highlights

- ±2.5 acre wooded homesite in Berkeley County
- Private rural setting just ±0.5 miles off Highway 35
- Mature natural hardwood/pine blend
- Convenient proximity to Lake Moultrie and Marion
- Peaceful Lowcountry environment
- ±10 minutes to St. Stephen
- ±25 minutes to Moncks Corner
- ±60 minutes to Charleston, Georgetown, and Sumter
- Convenient access to regional employment, dining, and shopping

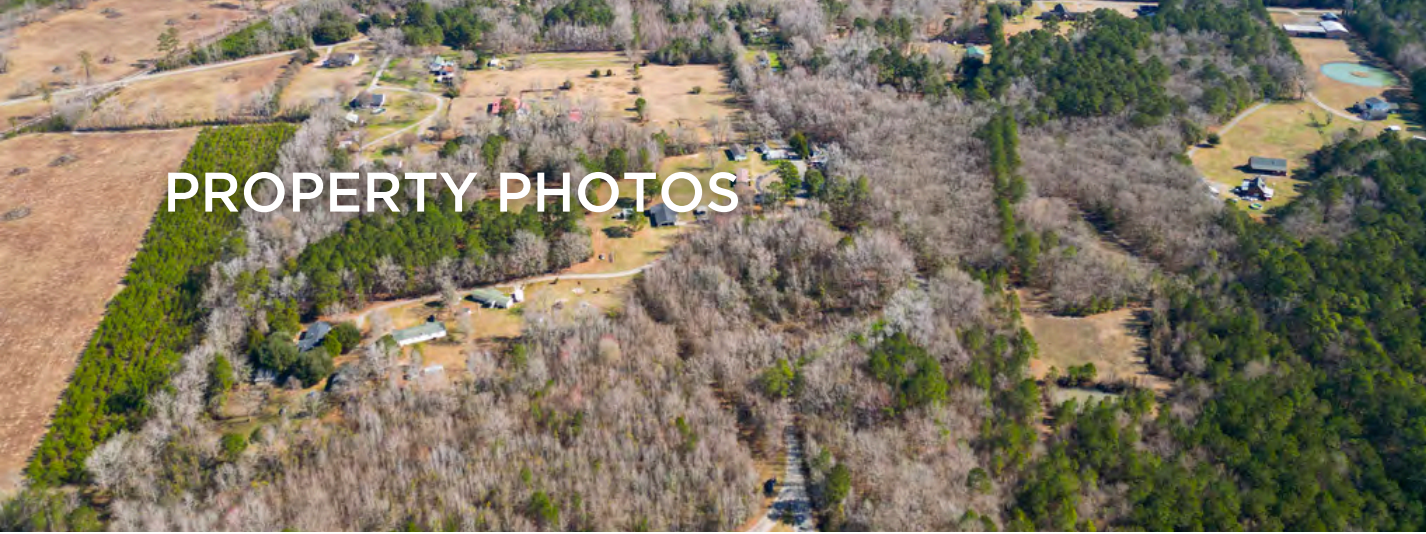
## Offering Summary

<b>Lot Size:</b>	±2.5
<b>Sale Price:</b>	\$59,999

*Acreage, taxes, utilities, and lot dimensions to be verified by Buyer and/or Buyer's agent*

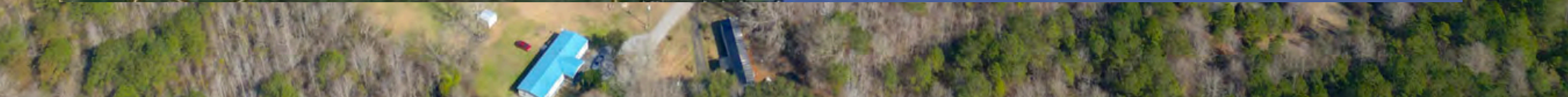
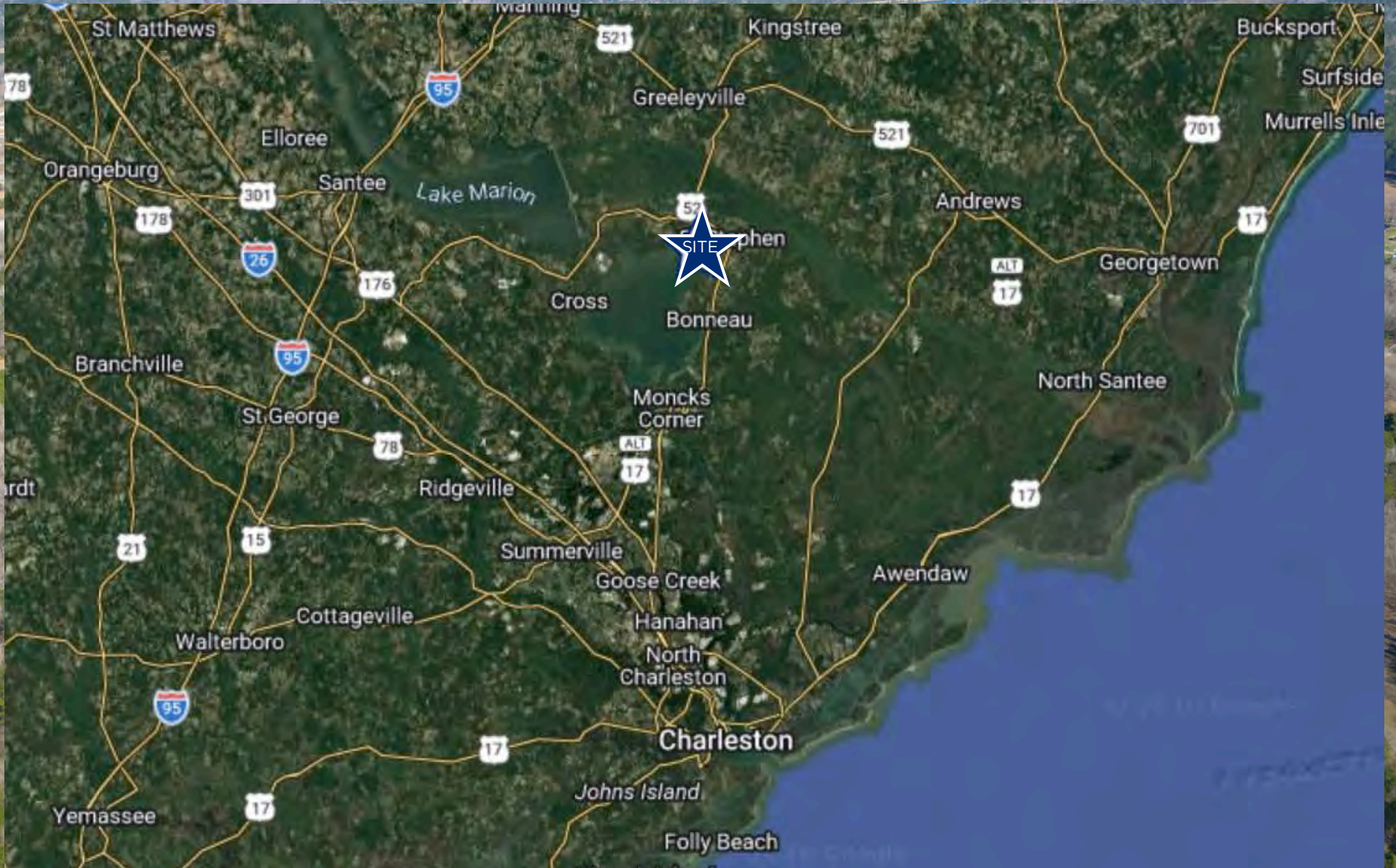


PROPERTY PHOTOS



# Retail Map

St Stephen, SC



# Contact Info

Reedy Land Co.

# REEDY



**Knox Duncan**

**Senior Associate**

864-608-0029

[kduncan@reedypg.com](mailto:kduncan@reedypg.com)



**Gabe Grammer**

**Senior Associate**

803-205-3260

[ggrammer@reedypg.com](mailto:ggrammer@reedypg.com)



**Jonathan Monts**

**Associate**

864-389-0299

[jmonts@reedypg.com](mailto:jmonts@reedypg.com)



**Denton Warlick**

**Associate**

864-238-7740

[dwarlick@reedypg.com](mailto:dwarlick@reedypg.com)