

# Lay Mill Road

±5 Acre Tract In Walhalla, SC



**REEDY**  
LAND CO.

# Parcel Overview

00 Lay Mill Rd., Walhalla, SC 29691  
Oconee County Tax ID: 095-00-01-072



# Executive Summary

00 Lay Mill Rd. | Walhalla, SC 29691

## Property Highlights

- ±5 acres of hardwoods
- Frontage on Lay Mill & Todd Bridge Rd
- Circular drive already cut in
- ±5 minutes off Hwy 11
- Within walking distance to Oconee Station State Historic Site
- ±14 minutes to High Falls County Park on Keowee
- ±23 minutes to Seneca
- ±1 hour to Greenville

## Offering Summary

**Lot Size:** ±5 Acres

**Sale Price:** \$130,000

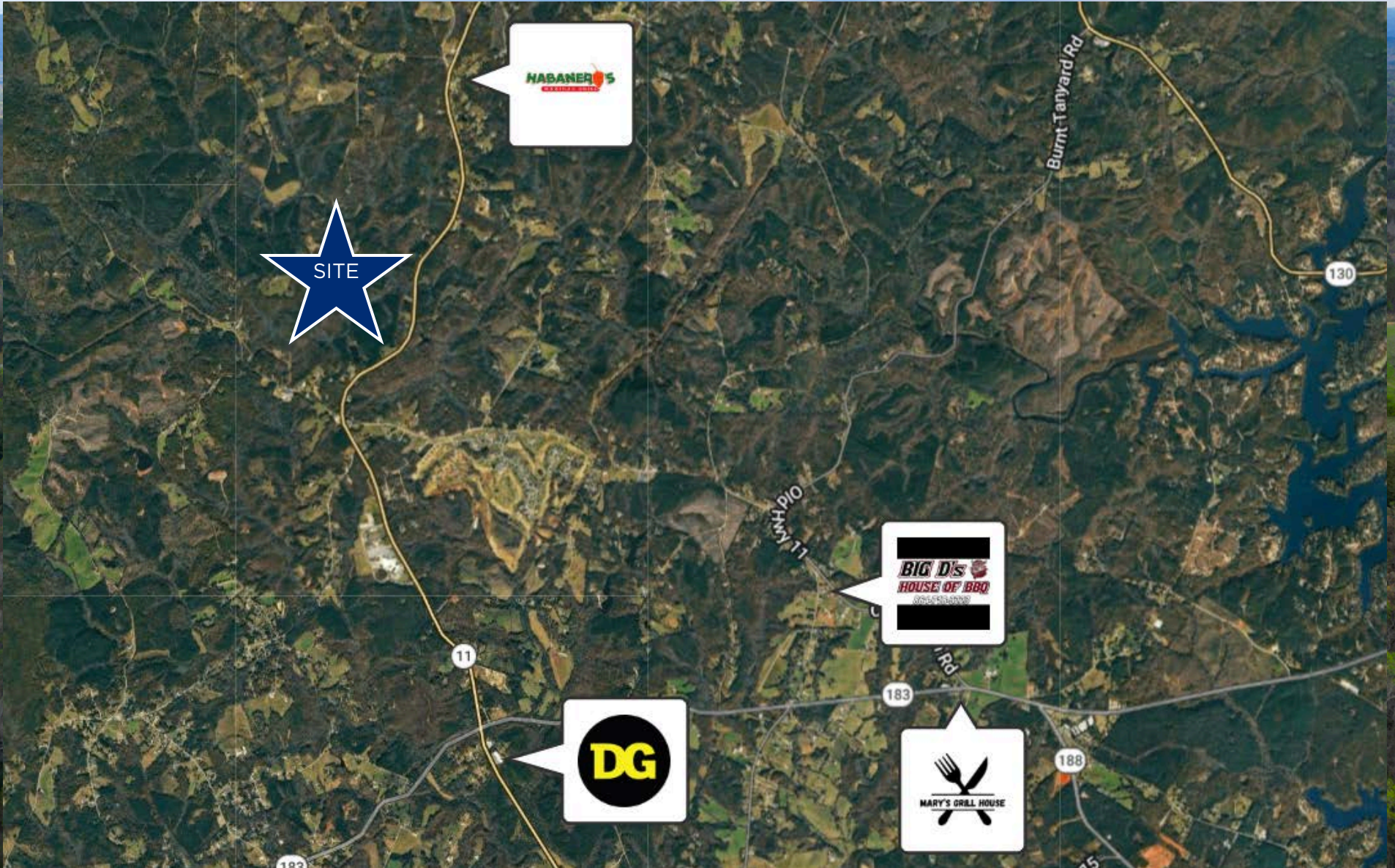
*Acreage, taxes, utilities, and lot dimensions to be verified by Buyer and/or Buyer's agent*



# Retail Map

Walhalla, SC

REEDY



# Contact Info

Reedy Land Co.

REEDY



**Knox Duncan**

**Senior Associate**

864-608-0029

[kduncan@reedypg.com](mailto:kduncan@reedypg.com)



**Gabe Grammer**

**Senior Associate**

803-205-3260

[ggrammer@reedypg.com](mailto:ggrammer@reedypg.com)



**Jonathan Monts**

**Associate**

864-389-0299

[jmonts@reedypg.com](mailto:jmonts@reedypg.com)



**Denton Warlick**

**Associate**

864-238-7740

[dwarlick@reedypg.com](mailto:dwarlick@reedypg.com)